

**PROPERTY HIGHLIGHTS**

- 1.36 Acres
- High Traffic Area
- Less than a mile from Interstate 81
- Ideal for Retail or Professional Office
- Located on RT 31 next to Cicero North Syracuse High school
- CNS is one of the largest high schools in Onondaga County, and in the top 7% in the United States
- Property currently has a 3 bedroom single family ranch home with 2 car garage and enclosed patio in excellent condition, and a small storage shed

Demographic	1 Mile	3 Miles	5 Miles
2016 Population Estimate	6,872	27,526	54,939
2016 Households Est	2,542	10,314	21,975
2016 Average HH Income	\$91,694	\$87,441	\$80,375
% Population Change 2000-2015	2.71%	14.20%	7.19%
% Household Change 2000-2015	12.07%	20.56%	13.70%

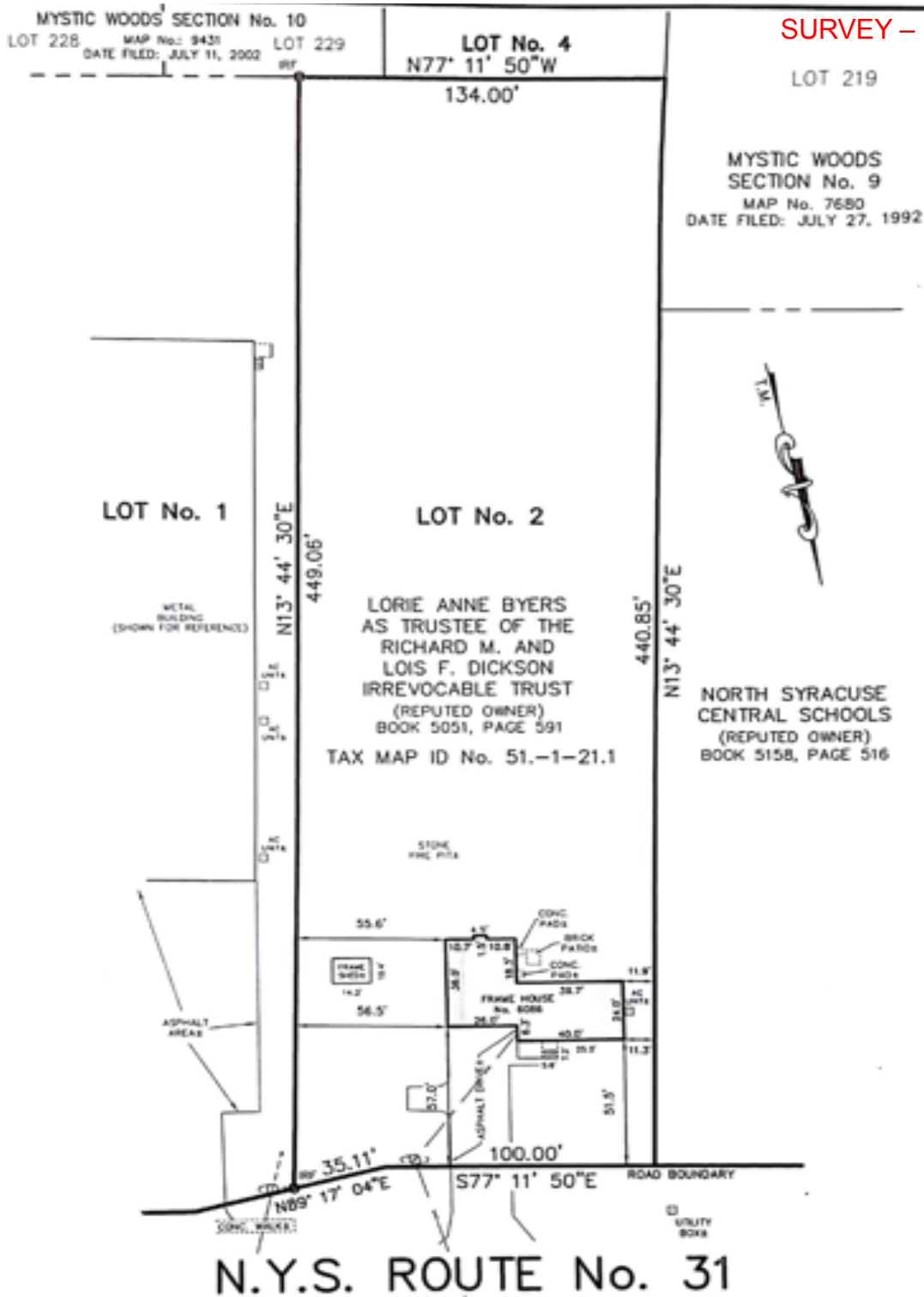
\*Source CoStar, MapInfo Pro, & NYS DOT (February 2017)

For more information, please contact:

**Tyler Rombough**  
315-299-6292  
trombough@theiconcompanies.com



The Icon Companies  
Icon Tower, Suite 202  
Syracuse, NY 13202  
theiconcompanies.com



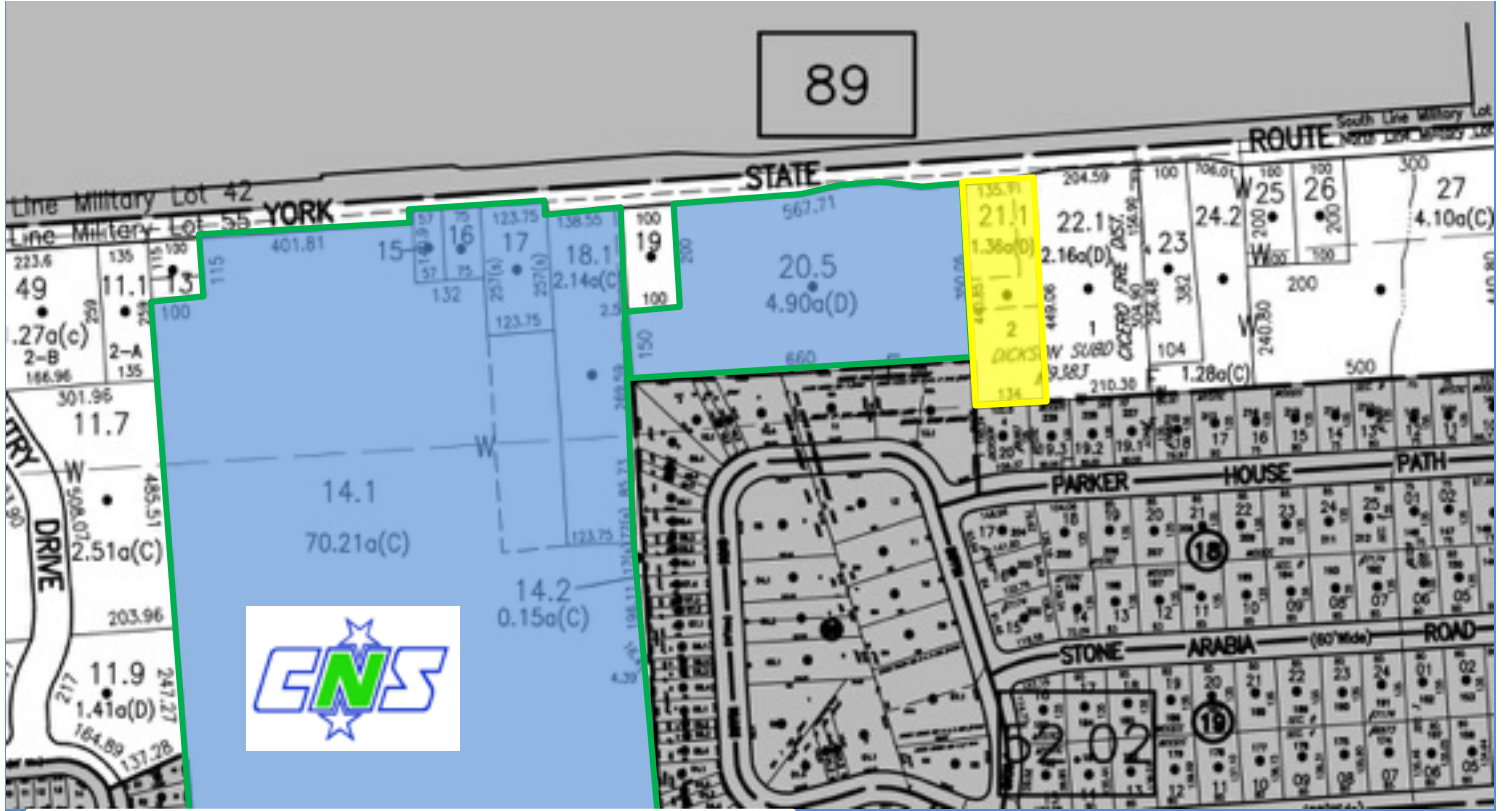
For more information, please contact:

**Tyler Rombough**  
315-299-6292  
trombough@theiconcompanies.com

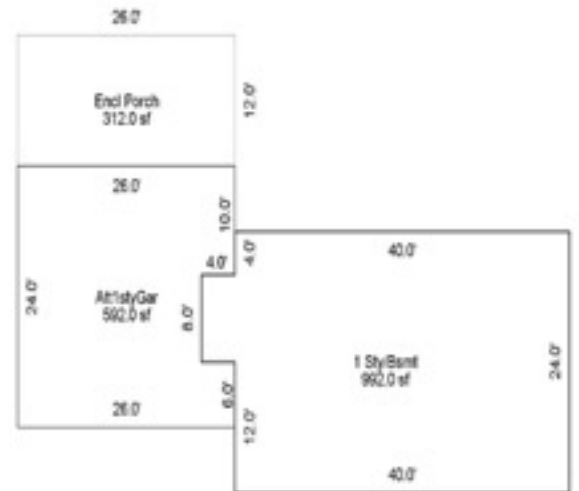


The Icon Companies  
Icon Tower, Suite 202  
Syracuse, NY 13202  
theiconcompanies.com

TAX MAP ID# 051.-01-21.1



**STRUCTURE DIMENSIONS**



For more information, please contact:

**Tyler Rombough**  
315-299-6292  
trombough@theiconcompanies.com

**VIEW FACING NORTHEAST**



For more information, please contact:

**Tyler Rombough**  
315-299-6292  
trombough@theiconcompanies.com



The Icon Companies  
Icon Tower, Suite 202  
Syracuse, NY 13202  
theiconcompanies.com